

# Cosco Shipping Lines (Germany) GmbH



Breakbulk



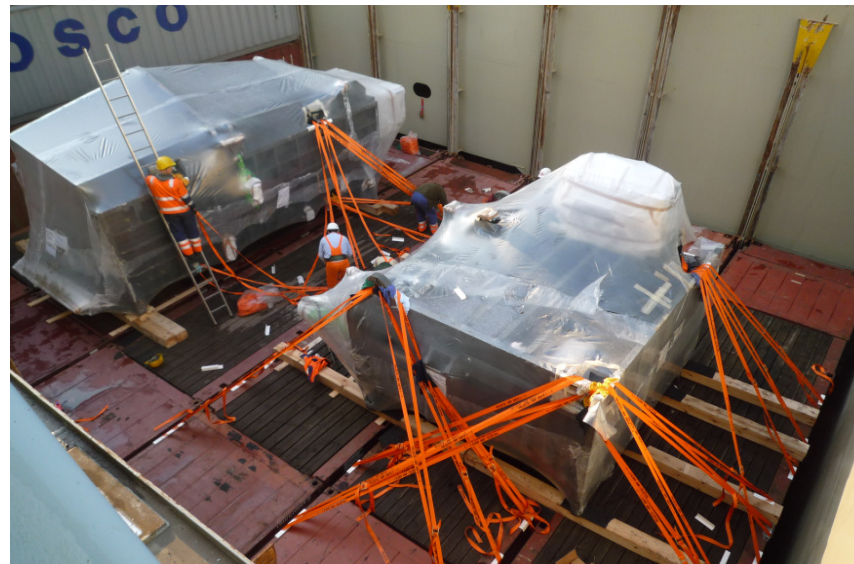
# Breakbulk Shipments on Container Vessel

- We are able to offer tailor-made solutions for non containerisable and heavy lift shipments on our main trade lanes:
  - E.g. Asia-Europe, Trans-Pacific, Intra Europe, Intra Asia, Cross Trades
  - Eastbound + Westbound, Northbound + Southbound



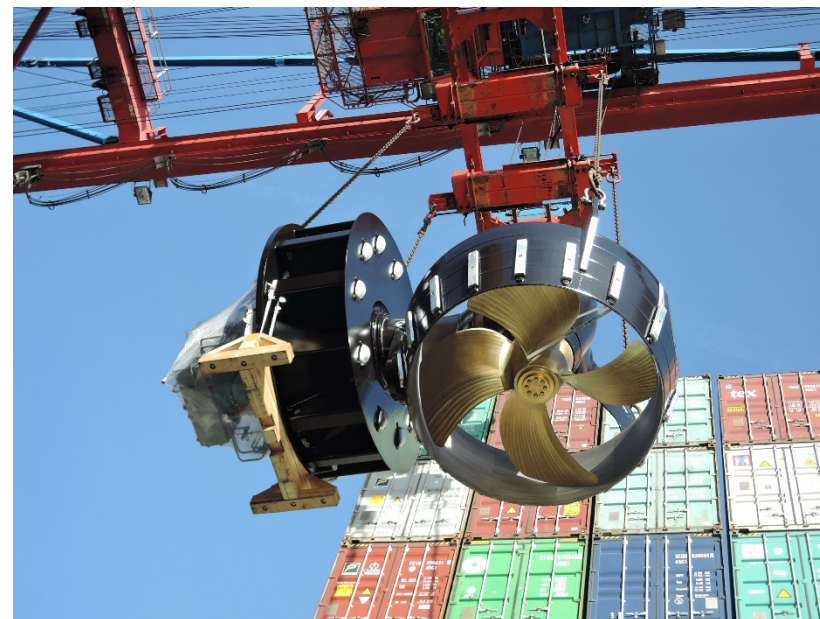
# Breakbulk Shipments on Container Vessel

- From dumper up to heavy construction machinery, from airplane parts to printing machines
- Whether packed or unpacked, we can stow your cargo seaworthy on our vessels
- A dedicated team of special cargo experts accompanies you through all stages of the project: inquiry, evaluation, booking, discharge at the final destination





# Breakbulk / Examples



# European Main Ports

- Hamburg - CTT Container Terminal Tollerort
  - gantry crane up to 65 tons
  - floating crane up to 200 tons



# European Main Ports

- Wilhelmshaven- Eurogate Container Terminal
  - gantry crane up to 85 tons
  - floating crane not available





# European Main Ports

- Rotterdam - Euromax Terminal
  - gantry crane up to 65 Tons
  - floating crane up to 250 Tons



# European Main Ports

- Antwerp - DP World Terminal 1700
  - gantry crane up to 95 Tons
  - floating crane up to 250 Tons





## Breakbulk / Survey

- All Breakbulk loadings on container vessel are accompanied by a surveyor
- Our partner: German Survey Marine – Capt. Stefan Eike Degenhardt
- After the loading / discharging operation we receive a full survey report
- If needed we can arrange surveys for all relevant activities in the port



GERMAN SURVEY MARINE



# Breakbulk / Multi Purpose and Heavy Lift Service



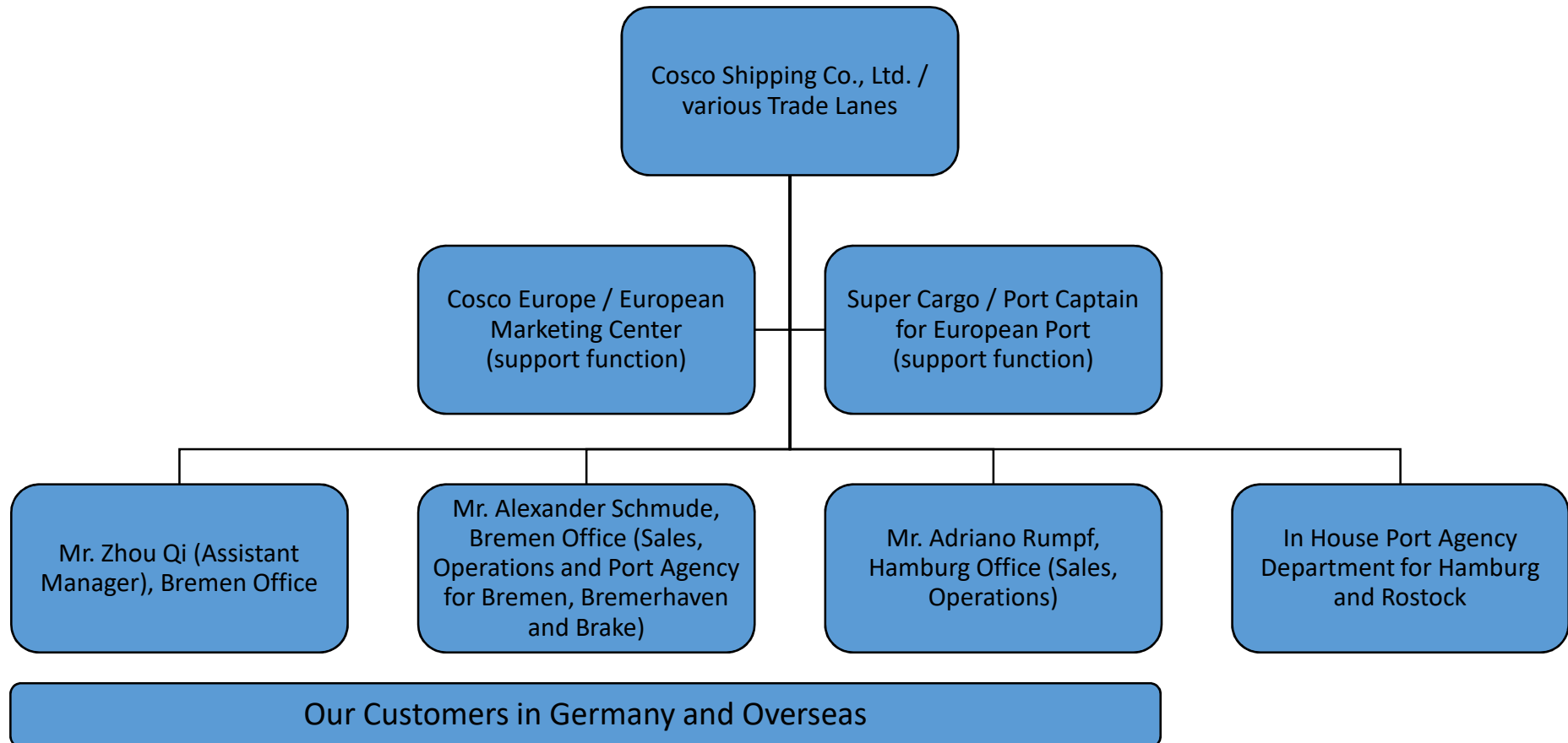
**Cosco Shipping Specialized Carriers Co. Ltd**



**Xiamen Ocean Shipping Company**



# Breakbulk / Our Setup and Communications





# Breakbulk / Multi Purpose and Heavy Lift Service

## **Main Services:**

- Multi Purpose / Heavy Lift vessel part and full charter
- The first technical center among the ship owners in Asia
  - 32 port captains
  - 8 in-house engineers
  - 3 cargo supervisors
  - Improving technical support to secure high quality transport service
- World wide services -> main focus from and to Far East

# Breakbulk / Multi Purpose and Heavy Lift Service

- Routes:**
- Far East – South East Asia / Intra Asia
  - Far East – Persian Gulf / Red Sea / Med / Europe
  - Far East – Africa
  - Far East – Americas / Australia



# Breakbulk / Multi Purpose and Heavy Lift Service

## Fleet

- 20 heavy lift vessels, more than 60 multipurpose vessels
  - Hatchway length from 25 up to 64.8 meters
  - Lifting capacity up to 700 tons
  - Shallow draft resulting in low dependence on port facility
- 6 Semi-submersible ships
  - Shallow draft, high speed ballast, high speed navigation, fully open deck and removable buoyant tank, high strength; DP-2 system: offering accurate offshore positioning and installation



# Breakbulk / Multi Purpose and Heavy Lift Service

## Examples



# Breakbulk / Multi Purpose and Heavy Lift Service

## Examples



# Contacts Project Team

## Hamburg office

Mr. Lars Lauenroth – Deputy Manager

[lars.lauenroth@coscoshipping.de](mailto:lars.lauenroth@coscoshipping.de)

+49 40 36092 – 158



Mr. Dennis von Gogh – Assistant Manager

[dennis.vongogh@coscoshipping.de](mailto:dennis.vongogh@coscoshipping.de)

+49 40 36092 – 232



Ms Tabea Schneider

[tabea.schneider@coscoshipping.de](mailto:tabea.schneider@coscoshipping.de)

+49 40 36092 - 193

Mr. Adriano Rumpf

[adriano.rumpf@coscoshipping.de](mailto:adriano.rumpf@coscoshipping.de)

+49 40 3609 - 407

## Bremen office

Mr. Qi Zhou – Assistant Manager

[zhou.qi@coscoshipping.de](mailto:zhou.qi@coscoshipping.de)

+49 40 36092 – 549



Mr. Alexander Schmude

[alexander.schmude@coscoshipping.de](mailto:alexander.schmude@coscoshipping.de)

+49 40 36092 – 547





Thank you!

